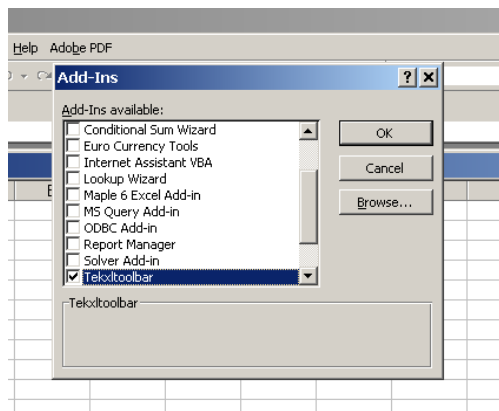


Scope Data Capture from Excel

S. Durkin April 24,2008

Open source TEKVISA software, acquired from the Tektronics Corporation web site, has been installed on your lab machine. This allows one to directly capture scope data/graphics into Excel, as well as remotely control your oscilloscope.

Open Excel and perform **Tools->Add-Ins** to get the following Add-Ins dialog.



Check the Tekxltoolbar, and click OK to close the dialog. You should now be able to access the TekXL toolbar. The commands should be pretty self explanatory.

If you have problems accessing the scope data, you can check if your scope is connected by running the TEKVISA Instrument manager.