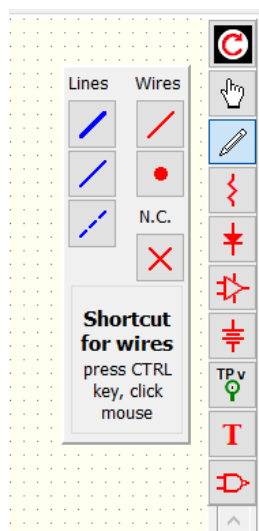
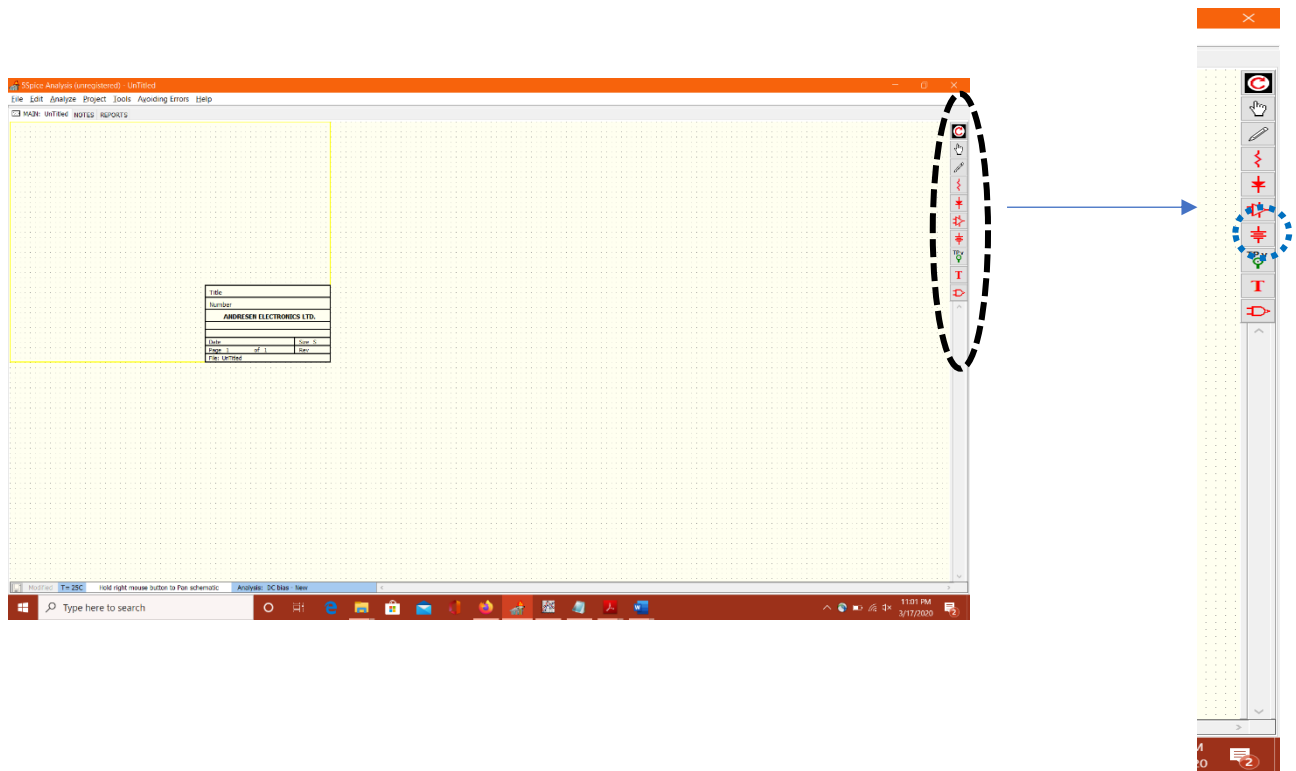
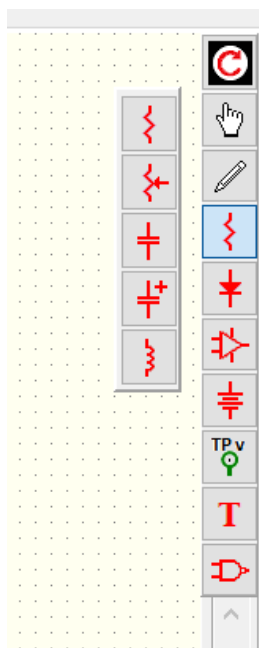


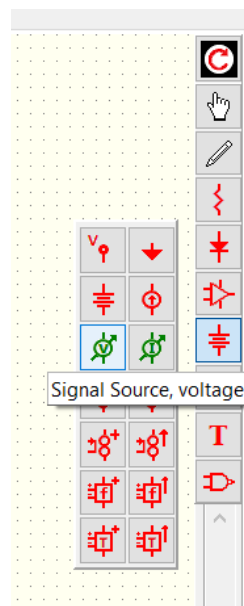
This is the instruction for 5spice simulation of op-amp.



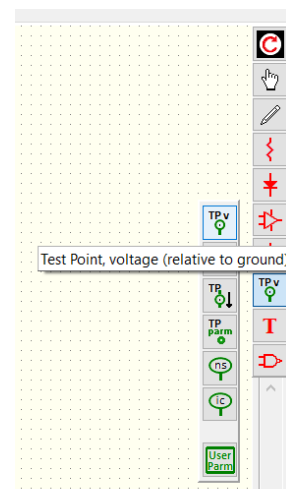
Use this panel to select the connector wires



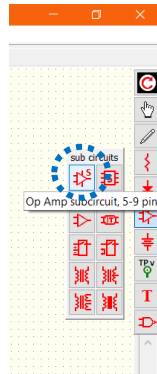
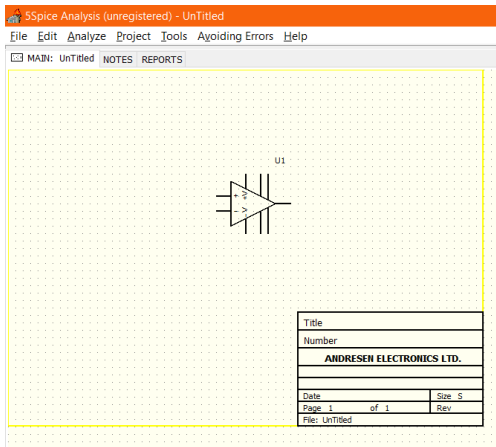
Select passive components



Select signal generator/power supply

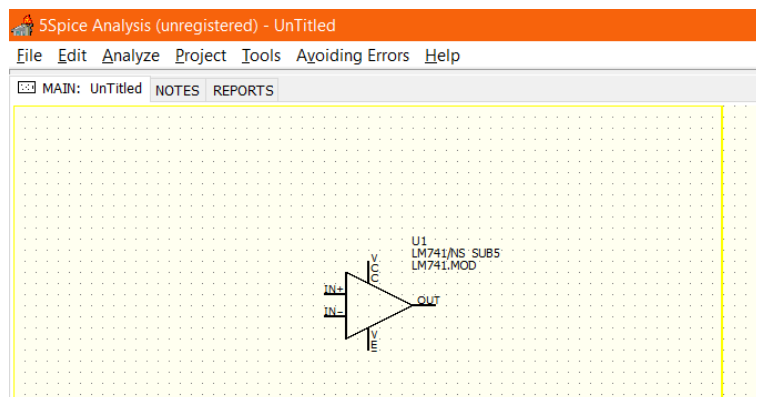
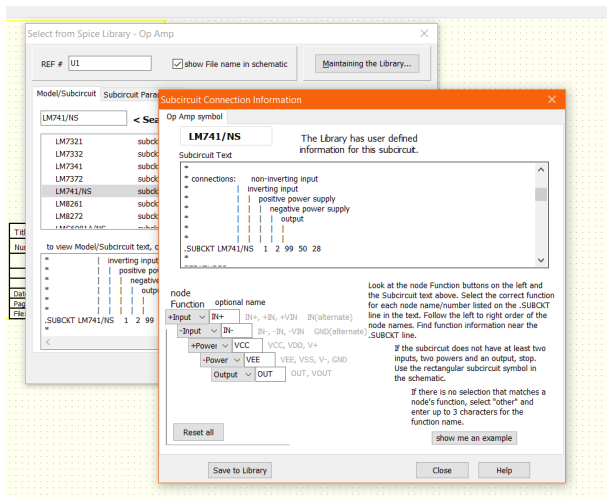


Select test point for plotting AC or transient analysis output



From the op-amp sub circuit, select the one with 5 – 9 pins, so you can control the ‘Turn ON’ voltage for the IC741

- Right click on the op-amp and click on edit parameters. Search for ‘LM741’. By selecting on LM741, click on ‘Add Connection Information’.



Pick the model for IC 741 and add the connection information as shown in the left figure. Once you save it to the library and close the window, it should show the IC as shown in the right picture.

- Once you have test points setup for input and output, you can use the Analyze menu and Select/Edit command to setup the type of analysis – AC, DC or Transient Analysis.
- The following figures explain how to select your analysis and setup the graphs.

