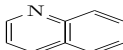


LOWEST ENERGY VIBRATIONAL MODES OF NINE NAPHTHALENE DERIVATIVES; EXPERIMENT AND THEORY

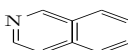
M. A. MARTIN-DRUMEL^a, O. PIRALI, Y. LAQUAIS^b, *Institut des Sciences Moléculaires d'Orsay, CNRS, UMR 8214, Université Paris XI, bât. 210, 91405 Orsay Cedex, France; SOLEIL Synchrotron, AILES beamline, L'orme des Merisiers, Saint-Aubin, 91192 Gif-Sur-Yvette, France; C. FALVO, P. PARNEIX and PH. BRECHIGNAC, Institut des Sciences Moléculaires d'Orsay, CNRS, UMR 8214, Université Paris XI, bât. 210, 91405 Orsay Cedex, France.*

FIR gas phase absorption spectra of nine naphthalene derivatives (azulene, quinoline, isoquinoline, biphenyl, diphenylmethane, bibenzyl, 2-, 3-, and 4-phenyltoluene) have been recorded at medium resolution (0.5 cm^{-1}) using a Fourier transform Bruker IFS125 interferometer located on the AILES beamline of SOLEIL synchrotron. Assignments of these weak vibrational bands were performed using density-functional theory calculations carried out at the harmonic and anharmonic levels (B97-1/6-311G(d,p)). Molecular structure dependence of the FIR spectra is discussed based on the comparative study of several selected FIR modes.

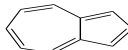
Quinoline
($\text{C}_9\text{H}_7\text{N}$)



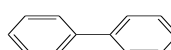
Isoquinoline
($\text{C}_9\text{H}_7\text{N}$)



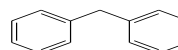
Azulene
(C_{10}H_8)



Biphenyl
($\text{C}_{12}\text{H}_{10}$)



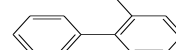
Diphenylmethane
($\text{C}_{13}\text{H}_{12}$)



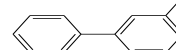
Bibenzyl
($\text{C}_{14}\text{H}_{14}$)



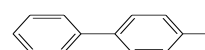
2-phenyltoluene
($\text{C}_{13}\text{H}_{12}$)



3-phenyltoluene
($\text{C}_{13}\text{H}_{12}$)



4-phenyltoluene
($\text{C}_{13}\text{H}_{12}$)



^aPresent address: LPCA, EA 4493, Université du Littoral Côte d'Opale, 59140 Dunkerque, France

^bPresent address: CEA, IRAMIS, SPAM, Lab. Francis Perrin, 91192 Gif-sur-Yvette, France