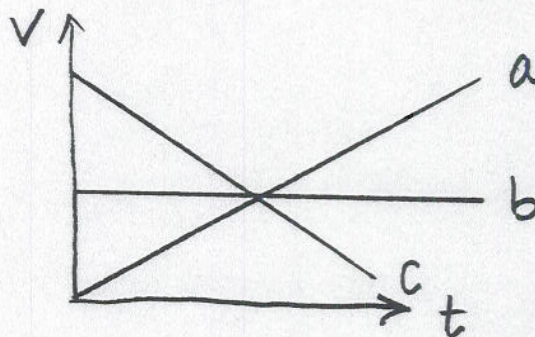
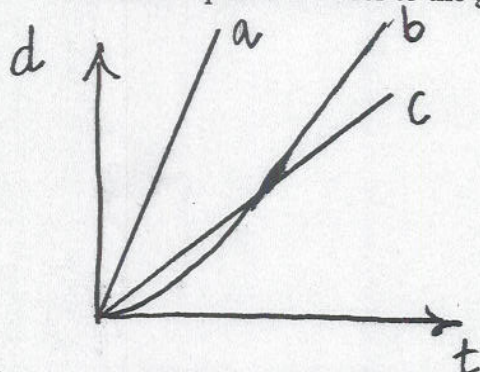


Key.

This is P110, Quiz 1. You are allowed to use a cheat sheet and a calculator.

The first 4 questions refer to the graphs below:



- A + C
1. Which trajectories are consistent with constant velocity motion (non-zero)? *always straight so (a) + (c)*
  2. Which velocities are consistent with constant velocity motion (non-zero)?
  3. Which trajectory represents the fastest motion? *steepest (a) L flat → so (b).*
  4. Which trajectory represents accelerated motion? *L curved → (b)*
5. The 2008 Boston Marathon had roughly 22,000 finishers and the winner runner finished the 26.2 mile course in just over 2 hours with an average speed of 13 mph. The slowest runners finished in a little over 7 hours. What was their average speed?

- a) 6.6 mph
- b) 13 mph
- c) 2.2 mph
- d) 3.3 mph
- ☒ e) 4 mph

$$2 \text{ hrs} \rightarrow 13 \text{ mph}$$

$$7 \text{ hrs} \rightarrow ?$$

Distance same  
so velocity gets  
smaller by  $\frac{7}{2} = 3.5$   
times.

$$v_1 = \frac{1}{3.5} v_2 = \frac{13}{3.5} \approx 3.7 \approx 4 \text{ mph}$$

OR

$$d = 26.2 \text{ mi}$$

$$t = 7 \text{ hrs}$$

$$v = \frac{26.2}{7} \text{ mph} = 3.7 \text{ mph} \approx 4 \text{ mph.}$$